

Did you answer all the questions?
Find the password (*in French*)
and get a present at the Tourist Offices!

PASSWORD

**CHAMROUSSE'S
TOURIST OFFICES**

1650 42 Place Belledonne

1750 Avenue du Père Tasse

T. : +33 (0)4 76 89 92 65

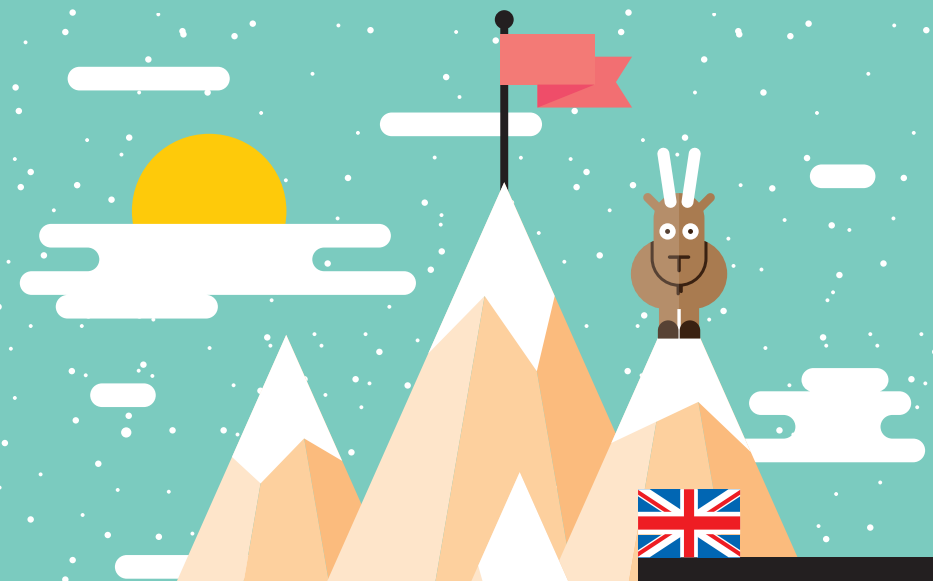
info@chamrousse.com

www.chamrousse.com



PARCOURS DU PETIT MONTAGNARD

LITTLE MOUNTAIN DWELLER TRACK





**TRACK GAME
BOOKLET**



CHAMROUSSE
Alpes - France 1700

WELCOME TO CHAMROUSSE !

Through this quizz, discover the mountain environment of Chamrousse (animals, flora and environment) as a family, travelling 3 km along the path between the 1650 and 1750 resort poles (duration = 1h/1h30).

To do this, answer at least one of the 2 questions you will find on the panels along the way ( = easy  = more difficult) and note the mystery letters that will help you to find the password (in French) at the end of the game!

2 possible directions:

- > Departure in front of the Town Hall [resort map 
- > Departure from the Environment House [resort map 

1st PANEL

Question 
Question 

MYSTERY
LETTER
...

2nd PANEL

Question 
Question 


MYSTERY
LETTER
...

3rd PANEL

Question 
Question 

MYSTERY
LETTER
...

4th PANEL

Question 
Question 


MYSTERY
LETTER
...

5th PANEL

Question 
Question 


MYSTERY
LETTER
...

6th PANEL

Question 
Question 


MYSTERY
LETTER
...

7th PANEL

Question 
Question 

MYSTERY
LETTER
...

8th PANEL

Question 
Question 

MYSTERY
LETTER
...

9th PANEL

Question 
Question 

MYSTERY
LETTER
...

10th PANEL

Question 
Question 

MYSTERY
LETTER
...